



Sterne Street, London, W12 8AD

A nicely presented and spacious three bedroomed split level maisonette presented over the upper two floors of this period terraced house located in this very popular residential area just moments from Shepherds Bush Green and Westfields West London shopping and entertainment complex, local shopping is also available around the green area. Accommodation provides :19'7 x 12' 7 spacious reception room, fitted shelving and storage, paneled window shutters, wood flooring, dual aspect fitted kitchen/dining area with views to side and rear, three bedrooms (two with custom wardrobes) family bathroom with further shower room, 14'10 x 12'6 private south facing decked terrace with views. Local transport are excellent and include Shepherds bush tube and mainline stations, numerous local bus routes with convenient vehicular access to A40/M4 to central London , Heathrow & the West. Hammersmith and Fulham Council Tax Band E. EPC E. The property is offered mainly unfurnished and available 24th January

- Lovely central West London location
- Great for transport links
- Extensive local shopping & amenities
- Spacious and well presented maisonette
- 19'7 x 12' 7 spacious reception room
- Dual aspect kitchen/dining room
- Three bedrooms
- Family bathroom & further shower room
- 14'10 x 12'6 south facing private terrace
- Available 24th January some light furnishings

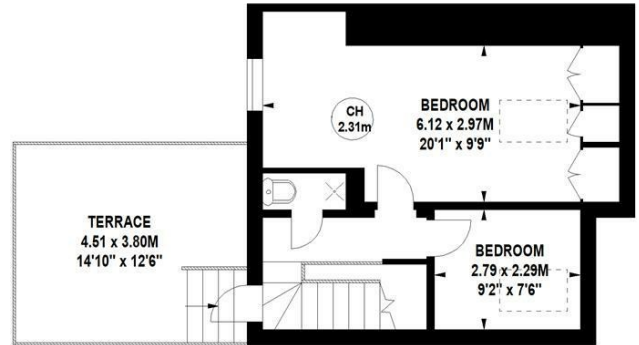
£3,200 Per Calendar Month

Sterne Street, W12

Approximate gross internal area

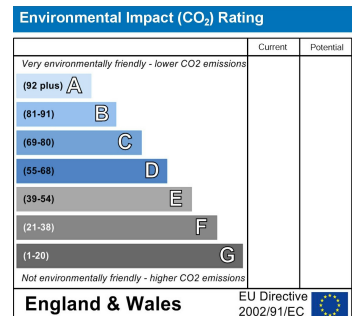
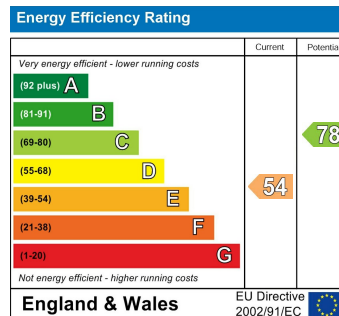
105.81 sq m / 1139 sq ft

Key :
CH - Ceiling Height



**Ground Floor
Entrance**

Not to scale, for guidance only and must not be relied upon as a statement of fact.
All measurements and areas are approximate only



5-7 Turnham Green Terrace, Chiswick, London, W4 1RG

Tel 020 8747 8800

E-mail lettings@whitmanandco.com

Website www.whitmanandco.com

PrimeLocation.com

Zoopla.co.uk

rightmove

OnTheMarket.com